

QUORUM COURT MINUTES

4/14/14

FILED
APR 15 2014
KADE HOLLIDAY
COUNTY & PROBATE COURT CLERK

**AGENDA
CRAIGHEAD COUNTY QUORUM COURT
COMMITTEE MEETING**

**April 14, 2014
7:00 P.M.**

Assembly and Prayer

Roll Call

County Judge's Updates:

- a. Bono Lake**
- b. Cache River**

Public Service Committee:

- a. Update on Handbook revisions.**
- b. Requests from both Philadelphia Fire District and Brookland Fire District to appoint board members to fill vacancies on their board of directors.**

Finance and Administration Committee:

- a. Review of financial reports and discussion of any current financial matters. Update on Juvenile Expansion Grant.**

Roads and Transportation Committee Meeting:

- a. County Road Superintendent Eugene Neff will update the committee concerning roads and bridges in the county.**

April 15, 2014 Quorum Court Meeting

12 Justices of the Peace present, Justice Weinstock was absent.

Judge Ed Hill called the meeting to order.

Judge Hill invited Justice Bob Blankenship to share his views of a trip to Washington, DC. Justice Blankenship stated that the trip was good and the group that went stayed busy meeting and dialoguing with Arkansas Representatives.

Judge Hill updated the Court on the Bono Lake Project and a slideshow of the project site was shown. The gates are now closed and the lake will now be able to fill up with water. Justice Jim Bryant and Justice Ray Kidd expressed satisfaction in the progress of the Bono Lake.

Justice Mike Hawkins asked the Court if they would be open to having a Craighead County Facebook page. The Court has and will continue to look into creating a page.

Judge Hill provided pictures of a problem area on the Cache River. The overflowing in this area causes flooding for residents of Craighead County. Justice Ken Stacks suggested a reservoir or concrete bridge to provide relief to the issue. Justice Kenny Hendrix asked why the Court was discussing the issue when it needs to be looked at by Lawrence County. Justice Josh Longmire asked what Lawrence County was doing to fix the problem. Judge Hill suggested Lawrence County did not have the means to fix the problem and the Court was discussing it because Craighead County farmers had expressed their concern to the County.

Sheriff Marty Boyd distributed a run-down of the Sheriff's Department through March 31, 2014 – *Appendix 1*. Justice Hawkins inquired about the vehicles the Sheriff's office recently purchased. Boyd expressed that the vehicles were working great for the Sheriff's Department.

Justice Blankenship asked Judge Hill if the roads in Craighead County were better or worse than expected after the long winter. Judge Hill stated that they were better than expected and that the new machines were doing well.

Justice Jim Bryant moved to adjourn the meeting. The motion was seconded by Justice Hawkins.

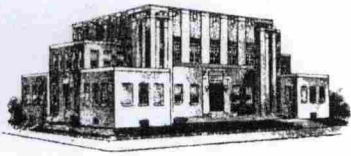
Also distributed to the Court was the Monthly Road Department Report – *Appendix 2*.

Appendix 1

Craighead County Sheriff's Data through March 31, 2014

| | Jan | Feb | Mar | Total |
|-----------------------------|-------------|--------------|--------------|--------------|
| Warrants Served | 648 | 580 | 458 | 3449 |
| Civil Papers Served | 125 | 89 | 94 | 125 |
| Police Dispatch for Service | 1218 | 1184 | 1202 | 7569 |
| Deputy Transport Miles | 7951 | 6057 | 6165 | 37,258 |
| Western Dist | Jan | Feb | Mar | Total |
| Circuit Account | \$38,675.35 | \$78,745.28 | \$77,416.48 | \$194,837.11 |
| Fine and Bond | \$34,112.65 | \$35,319.27 | \$39,859.54 | \$200,905.45 |
| Civil Process | \$5,080.00 | \$3,610.00 | \$4,490.00 | \$27,790.00 |
| Gen Rcpts | \$4,320.00 | \$3,725.00 | \$3,750.00 | \$25,561.00 |
| Total Per Month | \$82,188.00 | \$121,399.55 | \$125,516.02 | \$449,093.56 |
| Eastern Dist | | | | |
| Circuit Account | \$4,287.51 | \$7,481.33 | \$1,925.00 | \$24,116.97 |
| Civil Process | \$440.00 | \$400.00 | \$3,020.18 | \$3,960.18 |
| Total Per Month | \$4,727.51 | \$7,881.33 | \$2,472.59 | \$25,604.56 |

| | | | | |
|---|---------------------|-------------------|---------------------|---------------------|
| Total West/East Combined | \$86,915.51 | 129,280.88 | \$127,988.61 | \$344,185.00 |
| Inmates Booked into Detention Center to date | Jan | Feb | Mar | Total |
| | | | | 2145 |
| Inmates Housed in Detention Center today | | | | 364 |
| Bailiff Transports | 123 | 109 | 155 | 767 |
| Number of Courts | 81 | 71 | 60 | 212 |
| Video Court | 21 | 20 | 20 | 61 |
| Law Enforcement Fatalities | Year to Date | | | |
| | 37 | | | |
| US Military Officer Fatalities | Year to Date | | | |
| | 14 | | | |



Craighead County Highway Department

2800 Moore Road
Jonesboro, AR 72401
870-933-4510



Appendix 2

Road Report March 2014

During the month of March a total number 3,680 yards of gravel from Spurlock Gravel pit, 1,044.56 tons of chat from Bradley and 1,307.63 tons of slag from Phoenix was hauled to the following locations:

East

| | | | | | |
|--------|--------|--------|--------|--------|--------|
| CR 655 | CR 531 | CR 532 | CR 884 | CR 990 | CR 510 |
| CR 846 | CR 945 | CR 802 | CR 985 | CR 636 | CR 655 |
| CR 635 | CR 674 | CR 672 | CR 812 | | |

A total number 1,324 yards of gravel was hauled in the eastern district and some of the gravel was hauled from the stockpile. 131 yards hauled to stockpile.

West

| | | | | | |
|-----------|--------|--------|-----------|--------|---------|
| CR 320 | CR 431 | CR 412 | CR 439 | CR 357 | CR 120 |
| Stockpile | CR 773 | CR 303 | CR 787 | CR 150 | CR 7743 |
| CR 757 | CR 337 | CR 714 | Stockpile | CR 364 | CR 155 |
| CR 257 | CR 259 | CR 333 | CR 270 | CR 775 | |

A total number 2,225 yards of gravel was hauled in the western district and some of the gravel was hauled from the stockpile

- | | | | | | | |
|---|---|---------|---------|--------|------|--|
| 3 | ICE | SLEET | ICE | SLEET | SNOW | |
| | Plowed off paved roads and put sand out on roads | | | | | |
| 4 | ICE | | | | | |
| | Plowed off paved roads and put sand out on roads | | | | | |
| | Cleaned Court house parking lots, Jonesboro High School, Lake City Court House, | | | | | |
| 5 | County help blade off roads Hwy 139 | Hwy 135 | Hwy 141 | Hwy 49 | Hwy | |
| | 226 | | | | | |
| | Cleaned off Lake City School parking lot, Lake City, City hall | | | | | |
| 6 | roads still bad worked on snow removal on several roads thru out the county | | | | | |

Brookland School

- 10 hauled 6 loads $\frac{3}{4}$ minus 142.91 tons and spread chat
 Hauled 6 loads class 7SB2 143.49 tons and spread chat
- 11 hauled 4 loads $\frac{3}{4}$ minus 96.24 tons and spread chat
- 17 hauled 3 loads chat and spread (no tickets)

City of Brookland

- 17 hauled 1 load chat
- 18 hauled cold mix for the city
- 20 hauled 4 loads of chat
- 27 hauled 4 loads of chat

Buffalo Island School

- 20 hauled 4 loads chat for ball field 81.42 tons

City of Caraway

- 12 hauled concrete scrape from Caraway to Bridge on CR 884

City of Black Oak

- 17 hauled 1 load chat

Bridge CR 884

- 10 excavator work at bridge to get ready to set crane up
- 11 working on pipe to set up for crane
- 12 finished installing pipe, widening road to set crane up. Set up pad for crane to set on.
- 13 worked on bridge
- 17 worked on bridge
- 18 worked on bridge
- 19 removed old bridge set up middle bent for pile and set pile in bridge deck. Drilled holes on end bent and set pile, set up pile driver and fueled on oil
- 20 drove pile, dug out ditch (Hoss)
- 24 dug end bent, set up form on end bent, set up middle bent to pour concrete.
- 25 poured concrete on end bent and middle bent
- 26 removed form off cap seal on end bent, dug dirt back for rip rap, hauled rip for end bent.
- 27 hauled rip to the bridge
- 31 removed form I beams and 4x4 off middle bent. Set panels on first span. Back filled bridge

Tile & Ditches(all driveway tiles are on the county right-of-way)

- 10 drainage tile on CR 751 2 tiles (Hoss)
- 11 ditching on CR 862(Dale)
- 12 unstop tile on CR 202 and mop out ditch
 Mop out ditch on CR 808
- 13 ditching on 672(Dale)
- 17 ditching on CR 672(Dale)
- 18 ditching on CR 683(Dale)

- 19 ditching on CR 673(Dale)
- 20 dale helping on the bridge on 884
Driveway tile on 905
- 25 removed old tile and replaced driveway tile on CR 977
Cleaned out ditch on CR 425
- 31 installed 2 county tile 48 x 30 with band across CR 928/ 937

Mowing

HB/JF

- 12 114 203 118
- 13 118 127
- 18 118 127

Signs

- 10 Gerald
Repaired green sign 319/335
New green sign 339/335 339/329
New left curve sign 333
- 11 repaired bridge arrow sign on 204
Repaired green sign on 403/406
Repaired Stop sign on 655/672
Repaired right curve sign on 673
- 13 (2) new weight signs on 108
Repaired 40 MPH signs on 203
Repaired arrow sign on 376
- 17 (2)slow child at play sign & a 15MPH signs on 360
New green sign on 333/360
Repaired green sign on 439/438
(2) new child at play 855
Repaired green sign on 841/880
Repaired Stop sign on 876 872
- 18 repaired green sign on 683/672
New arrow sign on 672
New green sign on 610
Repaired Stop sign on 641
Repaired green sign on 641/664
Repaired 40 mph sign on 812
Repaired right curve sign on 817
Repaired blue sign on 812
855 new child at play sign
- 19 Repaired green sign on 761 759/7593 912 914 916 907 912
963/936
Repaired 35MPH & child at play signs on 761
New green sign on 910/915

- 20 repaired Stop sign 672
New Stop sign 641
Repaired Stop sign on 906
Repaired Blue sign on 977
Removed old sign post in the (300'S) (600's)(900's)(700's)
- 24 repaired Stop sign on 127
New green sign on 213/209
Repaired Stop sign on 204/233
New Slow children at Play 418(2)
Repaired green sign on 455/457
Repaired Stop sign on 476/Hwy163S

Asphalt

Patch work

- | | | | | |
|----|-----------------------------|-----|-----|-----|
| 10 | patch with cold mix on 912 | 847 | 745 | 760 |
| 18 | patched holes with cold mix | 362 | 319 | 353 |

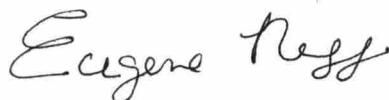
Atlas Asphalt

- | | | | |
|----|---|-------|--|
| 17 | patch cold mix various roads | | |
| 25 | CR 755 1 st day to use New Asphalt Machine | | |
| 26 | CR 755 | | |
| 27 | CR 752 | | |
| 31 | CR 132 | CR127 | |

Misc.

- 5 put mail box up on CR 505
- 10 hauled 4 loads sand from drum and gravel to stockpile for roads
- 17 picked up road side stuff on various roads took to landfill
Fixed wash out on CR 192
- 18 Hauled scrape concrete to CR 815
- 19 fixed washouts on the bridge on CR 204
Dip out ditch on CR 460
Washout on CR 608
- 26 clearing on CR 133 (Hoss)
- 27 put chat around mail box on CR 118

Eugene Neff



Road Superintendent
EN/ca

**Grader Report
March 2014**

Matt Leonard – Snow Routes

| | | | | | | | | | | | | |
|-----|------------------------------|-----|-----|-----|-----|-----|-----|-----|-----|--|--|--|
| 3-3 | ice on roads | | | | | | | | | | | |
| 3-4 | ice on roads | | | | | | | | | | | |
| 3-5 | ice on roads | | | | | | | | | | | |
| 3-6 | ice on roads | | | | | | | | | | | |
| 3-7 | ice on roads pushed snow off | 648 | 655 | 683 | 686 | 693 | 672 | 690 | 660 | | | |
| | 815 | 819 | 822 | 696 | | | | | | | | |

John James - Cash Route

| | | | | | | | | | | | | |
|----|----------------------|-----|-----|-----|----------------------|-----|-----|-----|-----|-----|-----|-----|
| 11 | 155 | 160 | 151 | 161 | 168 | 157 | 167 | 173 | | | | |
| 12 | 177 | 172 | 179 | 189 | 197 | 187 | 192 | 191 | 194 | 184 | | |
| 13 | 264 | 255 | 246 | 243 | 254 | 270 | 267 | 273 | 276 | 278 | 277 | 259 |
| 19 | 194 | 191 | 192 | 184 | 199 | 181 | 197 | 189 | 248 | 177 | 172 | 713 |
| 24 | 161 | 155 | 160 | 233 | 212 | 214 | 237 | | | | | |
| 25 | 263 | 264 | 246 | 255 | spread gravel on 276 | | | 273 | | | | |
| 26 | spread gravel on 233 | | | | | | | | | | | |
| 27 | spread gravel on 270 | | | 259 | 257 | | | | | | | |

Gary Cox - Road Builder

| | | |
|----|---------------------------------|------------|
| 10 | spread chat at Brookland school | |
| 11 | spread chat at Brookland school | |
| 12 | spread chat on 431 | graded 408 |
| 13 | spread chat on 431 | 439 |

Bryan Tyler – Valley View Route

| | | | | | | | | | | | | |
|-----|-----------------------|-----|-----|------|-----|-----|-----|-----|-----|-----|-----|-----|
| 3-7 | plowed snow off roads | | | | | | | | | | | |
| 11 | 406 | 423 | | | | | | | | | | |
| 12 | 621 | 608 | 619 | 617 | 604 | 611 | 602 | 202 | 206 | | | |
| 13 | 102 | 104 | 108 | 109 | 201 | 200 | 444 | 450 | 209 | 210 | | |
| 18 | 403 | 456 | 478 | 482 | 486 | 474 | 461 | 442 | 468 | 464 | 466 | |
| | 462 | 460 | 463 | 467 | | | | | | | | |
| 20 | 452 | 451 | 441 | 440 | 439 | 438 | | | | | | |
| 24 | 102 | 104 | 108 | 109 | 200 | 201 | 202 | 213 | 209 | 218 | 227 | 210 |
| | 206 | | | | | | | | | | | |
| 25 | 423 | 410 | 415 | 4191 | 412 | 431 | 439 | 440 | 444 | 450 | 441 | |

| | | | | | | | | | | | | |
|----|-----|-----|-----|-----|-----|-----|-----|-----|-----|-----|-----|-----|
| 26 | 405 | 607 | 612 | 422 | 610 | 619 | 617 | 604 | 621 | 602 | 611 | |
| 31 | 430 | 429 | 460 | 463 | 467 | 462 | 464 | 466 | 472 | 468 | 456 | 480 |
| | 456 | 403 | 478 | 486 | 482 | 474 | 461 | 442 | 452 | | | |

Steve Boyd – Sterling Springs Route

| | | | | | | | | | | | | |
|-----|------------------------------|-----|-------------------------------|------|-----|------|------|-----|-----|-----|-----|-----|
| 3-7 | graded snow and ice off road | | | | | | | | | | | |
| 10 | 773 | 774 | 775 | 787 | 783 | 781 | 7808 | 785 | 799 | 790 | 796 | 795 |
| | 797 | 793 | 761 | | | | | | | | | |
| 11 | 763 | 765 | 7625 | 7670 | 770 | 769 | 785 | 729 | | | | |
| 12 | 305 | 395 | 320 | 339 | 329 | 337 | 303 | 335 | 332 | 714 | 713 | 710 |
| | 700 | 756 | spread 2 loads of chat on 960 | | | | | | | | | |
| 17 | spread chat on 320 | | | | | | | | | | | |
| 18 | 304 | 305 | 395 | 339 | 329 | 337 | 303 | 335 | 332 | | | |
| 19 | 775 | 774 | 773 | 787 | 781 | 783 | 777 | 785 | 778 | 799 | 796 | 795 |
| 20 | 793 | 761 | 771 | 769 | 729 | 728 | 726 | 751 | 723 | | | |
| 24 | spread gravel on 960 | | | 952 | | | | | | | | |
| 25 | 940 | 953 | 961 | 959 | 951 | 7625 | 7670 | | | | | |
| 26 | 703 | 714 | 741 | 740 | 712 | 746 | 745 | 768 | | | | |
| 27 | 773 | 757 | 787 | 781 | 783 | 7808 | 789 | | | | | |
| 31 | 304 | 395 | 305 | 339 | 329 | 337 | 303 | 335 | 332 | 320 | 322 | |

Mark Haines & Steve Boyd – Sterling Springs Route

| | | | | | | | | | | | | |
|----------------------|-----|-----|------|------|----------------------|--------------------|------|------|--------|------|------|------|
| 6 | 757 | 747 | 755 | 7472 | 787 | 783 | 7808 | 799 | 797 | 790 | 761 | 765 |
| | 763 | 745 | 746 | 7629 | 729 | 714 | 755 | | | | | |
| 11 | 775 | 774 | 757 | 787 | 781 | 783 | 7808 | 785 | 795 | 799 | 797 | 7922 |
| | 793 | 761 | 7670 | 7625 | 763 | 765 | | | | | | |
| 12 | 304 | 327 | 339 | 329 | 305 | 3183 | 396 | 303 | 335 | 7516 | 7182 | 337 |
| | 320 | 719 | 700 | 713 | 714 | 722 | 306 | 742 | 723 | 726 | 728 | 764 |
| 13 | 745 | 746 | 741 | 706 | 768 | 703 | 951 | 952 | | | | |
| 18 | 304 | 773 | 757 | 777 | | spread chat on 787 | | | | | | |
| 19 | 339 | 337 | 714 | 751 | spread gravel on 714 | | | 337 | | | | |
| 20 | 745 | 746 | 712 | 706 | 741 | 7676 | 763 | 951 | 952 | | | |
| 24 | 741 | 943 | 952 | 747 | 745 | 775 | 774 | 977 | 7743 | | | |
| Spread gravel on 993 | | | 987 | | | | | | | | | |
| 25 | 959 | 960 | 961 | 953 | 790 | 7922 | 793 | 797 | 795 | 799 | 796 | 778 |
| | 798 | 789 | | | | | | | | | | |
| 31 | 304 | 339 | 335 | 329 | 305 | 303 | 337 | 320 | 301714 | 710 | 700 | 306 |
| | 302 | 722 | 747 | 775 | 774 | 773 | 776 | 7742 | | | | |

J.W. Redding – Childress Route

| | | | | | | | | | | |
|-----|-------------------------------|-----|-----|------|-----|-----|-----|-----|-----|-----|
| 3 | pushed snow off 502 | 505 | 507 | 510 | 506 | 514 | 541 | 531 | 520 | 534 |
| 4-7 | pushed snow and ice off roads | | | | | | | | | |
| 10 | 504 543 506 | 545 | 549 | 560 | 559 | 567 | 563 | 558 | | |
| 11 | 562 585 575 | 565 | 564 | 516 | 582 | | | | | |
| 12 | 512 513 spread slag on | 532 | 531 | | | | | | | |
| 13 | 512 515 514 | 523 | 518 | 544 | 538 | 530 | | | | |
| 18 | 585 582 581 | 571 | 544 | 520 | 524 | | | | | |
| 19 | 531 548 546 | 553 | 542 | 532N | | | | | | |
| 20 | 522 524 532S | 531 | 528 | 520 | 530 | 526 | | | | |
| 24 | 504 502 535 | 543 | 549 | 506 | 546 | 560 | | | | |
| 25 | 559 567 558 | 563 | 562 | 565 | 575 | 585 | | | | |
| 26 | 522 526 516 | 582 | 531 | 548 | 546 | 540 | | | | |
| 31 | 512 515 514 | 523 | 565 | 575 | 585 | 516 | 564 | | | |

Curtis Sharp & Jeff Sanford Bono route

3-7 plowed snow and ice off roads

| | | | | | | | | | | |
|----|---------------------|--------------|----------------|-----|------------------|------|-----|-----|------|-----|
| 11 | 101 111 333 | 326 | 323 | 334 | 378 | 308 | 383 | 328 | 398 | 399 |
| | 341 120 122 | 123 | spread chat on | 101 | 361 | 120 | | | | |
| 12 | 357 Redwood | 361 | 364 | 380 | 376 | 372 | 317 | 374 | 338 | 369 |
| | 342 312 313 | 309 | 315 | 314 | 348 | 130 | 134 | 148 | 124 | 125 |
| | 137S spread chat on | 357 | 122 | | | | | | | |
| 13 | 381 384 382 | 394 | 379 | 389 | 395 | 331 | 392 | 390 | 343 | 300 |
| | 351 117 119 | 112 | 133 | 132 | 152 | 149 | 170 | 171 | 194 | 159 |
| | 142 140 137 | part of 147N | | | | | | | | |
| 18 | 147N 144 146 | 150 | 147S | 398 | 308 | 383 | 323 | 367 | 326 | 334 |
| | 333 378 341 | 399 | 328 | | | | | | | |
| 19 | 120 122 123 | 357 | Redwood | | 361 | 380 | 364 | 372 | 317 | 348 |
| | 314 315 313 | 312 | 342 | 338 | 369 | 111 | 117 | 119 | 112 | 132 |
| | 133 149 124 | 125 | 138 | 139 | 137S | 137N | 142 | 140 | | |
| 20 | 194 171 170 | 159 | 361 | 364 | spread gravel on | 364 | | | | |
| 24 | 159 130 134 | 148 | 350 | 355 | 348 | 357 | 376 | 300 | 3335 | 392 |
| | 331 395 377 | 326 | 7743 | 774 | 775 | 334 | 336 | 323 | 333 | |
| | Redwood 364 | 383 | | | | | | | | |
| 25 | 328 398 341 | 308 | 394 | 361 | 382 | 381 | 384 | | | |

Phillip Hurst – Caraway Route

| | | | | | | | | | | |
|----|----------------|-----|-----|-----|-----|-----|------|------|-----|-----|
| 3 | 837 841 840 | 846 | 856 | | | | | | | |
| 4 | 837 841 880 | 882 | 855 | 831 | 832 | 139 | 135N | 135S | | |
| 5 | Caraway School | 135 | 148 | 139 | | | | | | |
| 6 | 837 836 840 | 848 | 852 | 850 | 862 | 858 | 859 | 842 | 838 | 834 |
| | 832 884 869 | | | | | | | | | |
| 7 | 837 841 831 | 830 | 509 | 500 | 513 | 880 | 847 | 547 | 554 | |
| 10 | 831 837S 841 | 855 | | | | | | | | |
| 11 | 509 513 508 | | | | | | | | | |

| | | | | | | | | | | |
|----|-----|-----|-----|-----|-----------------|-----|-----|-----|-----|-----|
| 12 | 831 | 830 | 512 | 510 | 508 | 554 | 556 | 538 | 547 | 838 |
| 13 | 847 | 836 | 832 | 834 | 878 | 876 | | | | |
| 17 | 846 | 510 | | | | | | | | |
| 18 | 510 | 831 | 830 | 837 | | | | | | |
| 19 | 884 | 860 | 861 | 874 | 868 | 866 | | | | |
| 20 | 856 | 852 | 850 | 848 | 840 | 858 | 859 | 862 | 838 | 842 |
| 24 | 837 | 890 | 880 | 887 | 876 | 878 | | | | |
| 25 | 869 | 960 | 841 | 855 | City of Caraway | | | | | |
| 26 | 837 | 513 | 500 | 509 | 508 | 510 | 558 | 583 | 554 | |
| 27 | 831 | 869 | 853 | | | | | | | |
| 31 | 832 | 853 | 834 | 847 | | | | | | |

Mark Knight – Bay area

| | | | | | | | | | | |
|----|---|-------------------------|-----------------------|-----|-----|-----|-----|-----|--|--|
| 1 | fixed hole on 907 | worked on 600-800 roads | | | | | | | | |
| 3 | bladed off 655 673 | 685 680 612 | | | | | | | | |
| 4 | bladed off 623 655 | | | | | | | | | |
| 10 | worked on grader | | | | | | | | | |
| 11 | spread slag on 655 | | | | | | | | | |
| 12 | spread slag on 990 | graded 990 | 995 | 997 | 998 | 994 | 946 | | | |
| 13 | spread slag on 802 | | | | | | | | | |
| 17 | worked on grader | | | | | | | | | |
| 18 | 621 608 624 | 617 619 | fixed wash out on 672 | | | | | | | |
| 19 | spread gravel on 655 | | | | | | | | | |
| 20 | 635 645 638 | 652 616 607 | 615 | 618 | 641 | 672 | | | | |
| 24 | 672 675 690 | 683 686 650 | 682 | 693 | 648 | 802 | 821 | 813 | | |
| | 819 820 | | | | | | | | | |
| 26 | hailed concrete to CR 844 to the bridge | | | | | | | | | |

Robert Anderson –Lake City Route

| | | | | | | | | | | |
|----|--|-------------------------------------|----------------------|--|--|--|--|--|--|--|
| 3 | bladed off snow on | 905 928 901 903 900 912 910 945 | | | | | | | | |
| 4 | bladed off snow on | 905 928 901 903 900 912 910 945 | | | | | | | | |
| 5 | bladed off Riverside school parking lot and roads | 945 | hwy 158 for state | | | | | | | |
| 6 | bladed off 992 947 | 965 955 906 912 910 907 909 927 956 | | | | | | | | |
| | 954 801 985 | 944 963 | | | | | | | | |
| 7 | 970 969 994 | 998 990 992 988 999 938 957 936 925 | | | | | | | | |
| | 973 | | | | | | | | | |
| 10 | moved equipment and worked in shop | | | | | | | | | |
| 11 | cleaned grader, loaded trucks with material, serviced grader | | | | | | | | | |
| 12 | 912 955 | | | | | | | | | |
| 13 | 906 965 906 | 936 | | | | | | | | |
| 17 | pulled shoulders on road | | | | | | | | | |
| 20 | 965 975 985 | 981 | | | | | | | | |
| 24 | 906 907 985 | 917 986 984 954 958 955 956 | | | | | | | | |
| 25 | 909 910 915 | 925 985 | spread gravel on 963 | | | | | | | |
| 26 | 973 936 934 | 957 963 937 | | | | | | | | |

| | | | | | | | | | | | | |
|----|-----|-----|-----|-----|-----|-----|-----|-----|-----------------------|--|--|--|
| 31 | 973 | 934 | 936 | 998 | 995 | 999 | 990 | 994 | spread gravel on 937\ | | | |
|----|-----|-----|-----|-----|-----|-----|-----|-----|-----------------------|--|--|--|

Allen Biggers – Bay Route

| | | | | | | | | | | | | |
|----|---------------------------|-----|-----|-----|-----|-----------------------|-----------|-----|--------------------|-----------|-----|-----|
| 4 | pushed snow off 636 | | | 638 | 635 | 652 | 626 | 645 | Lillie Rd | Cooper Rd | | |
| | Old Bay Hwy Catfish Drive | | | | | | | | | | | |
| 5 | pushed snow off 673 | | | 812 | 691 | Hwy 158 Catfish Drive | | | | | | |
| 6 | pushed snow off 636 | | | 638 | 635 | 652 | 616 | 634 | 625 | 618 | 607 | 639 |
| | 615 | 648 | 686 | 693 | 650 | 655 | 683 | 682 | 821 | 804 | 664 | 641 |
| | 672 | 675 | 690 | 824 | 819 | 817 | 823 | 660 | 810 | 888 | | |
| 10 | Lillie Rd Cooper Rd | | | 644 | 646 | 679 | 698 | 696 | 680 | 681 | 888 | 828 |
| | 826 | 810 | 660 | 675 | | | | | | | | |
| 11 | 639 | 641 | 672 | 690 | 638 | | | | | | | |
| 12 | 664 | 650 | 802 | 682 | 686 | 693 | 671 | 687 | 800 | 803 | 801 | |
| 13 | 804 | 813 | 808 | 820 | 821 | 818 | 638 | 674 | spread slag on 674 | | | 635 |
| | Spread chat 636 | | | | | | | | | | | |
| 19 | 823 | 817 | 819 | 824 | 815 | 816 | 809 | 822 | 688 | 626 | | |
| 20 | 652 | 638 | 635 | 645 | 616 | 615 | 607 | 625 | 618 | 639 | 641 | 674 |
| | 672 | 690 | 638 | 650 | 648 | 686 | 693 | 682 | 802 | | | |
| 21 | 804 | 813 | 808 | 820 | 655 | Lillie Rd | | | | | | |
| 24 | 674 | 672 | 690 | 638 | 650 | Lillie Rd 648 | | 686 | 682 | 802 | 804 | 813 |
| | 808 | 820 | 821 | 655 | | | | | | | | |
| 25 | 815 | 818 | 817 | 824 | 819 | 679 | Thomas St | | Ballpark | | | |
| 26 | 815 | 823 | 817 | 812 | 826 | 696 | 888 | 691 | 698 | 681 | 626 | |
| 27 | 652 | 635 | 636 | 638 | | | | | | | | |
| 31 | 648 | 646 | 644 | 638 | 635 | 616 | 615 | 607 | | | | |